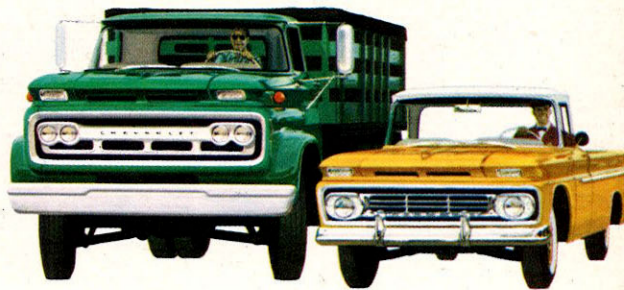


1962 CHEVROLET JOBMASTER TRUCKS



more earning power in models to match every job!

If you're out to chop costs and boost profits, there's no better place to pick your next truck than right here—in Chevrolet's better-than-ever model lineup for '62. Today's most practical answer to virtually any hauling problem can be found among the 203 Chevrolet models outlined on these pages. Power is *up* across the board: from the newly provided 261 Six* in light-duty models to the tough new 327 V8* in middleweights and the big new 409 V8* in heavyweights. And GM Series 53 Diesels are now provided in Series 60, 60-H and 80! Big load capacity and low-maintenance durability are Chevrolet strong points, whether your truck is a pickup, panel, Carryall, Step-Van,

Forward Control or chassis-cab. Medium- and heavy-duty models are available in conventional-cab, Low Cab Forward and Tilt Cab versions—and all offer the ultimate in working efficiency for the most exacting job requirements. True *truck* components, such as advanced Independent Front Suspension, rugged Comfort-King Cabs and high-capacity frames and axles, know how to do the job in the most economical way. And, for '62, the quality and utility of Chevrolet's rear-engine Corvair 95 pickups and Corvan come thoroughly proved by a full year of service on jobs all over America. Here, to hike your earning power to new highs, is a new world of truck worth from Chevrolet!

**Optional at extra cost.*



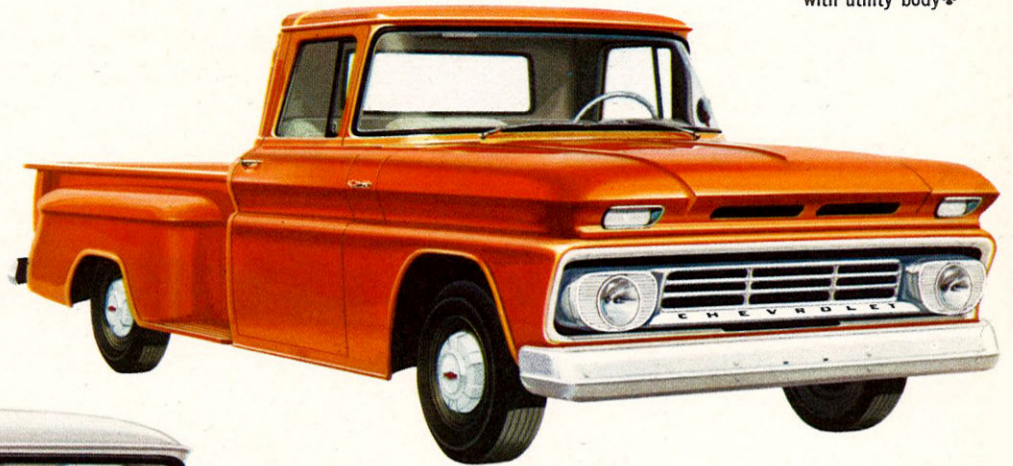
JOB-MATCHED

LIGHT-DUTY MODELS

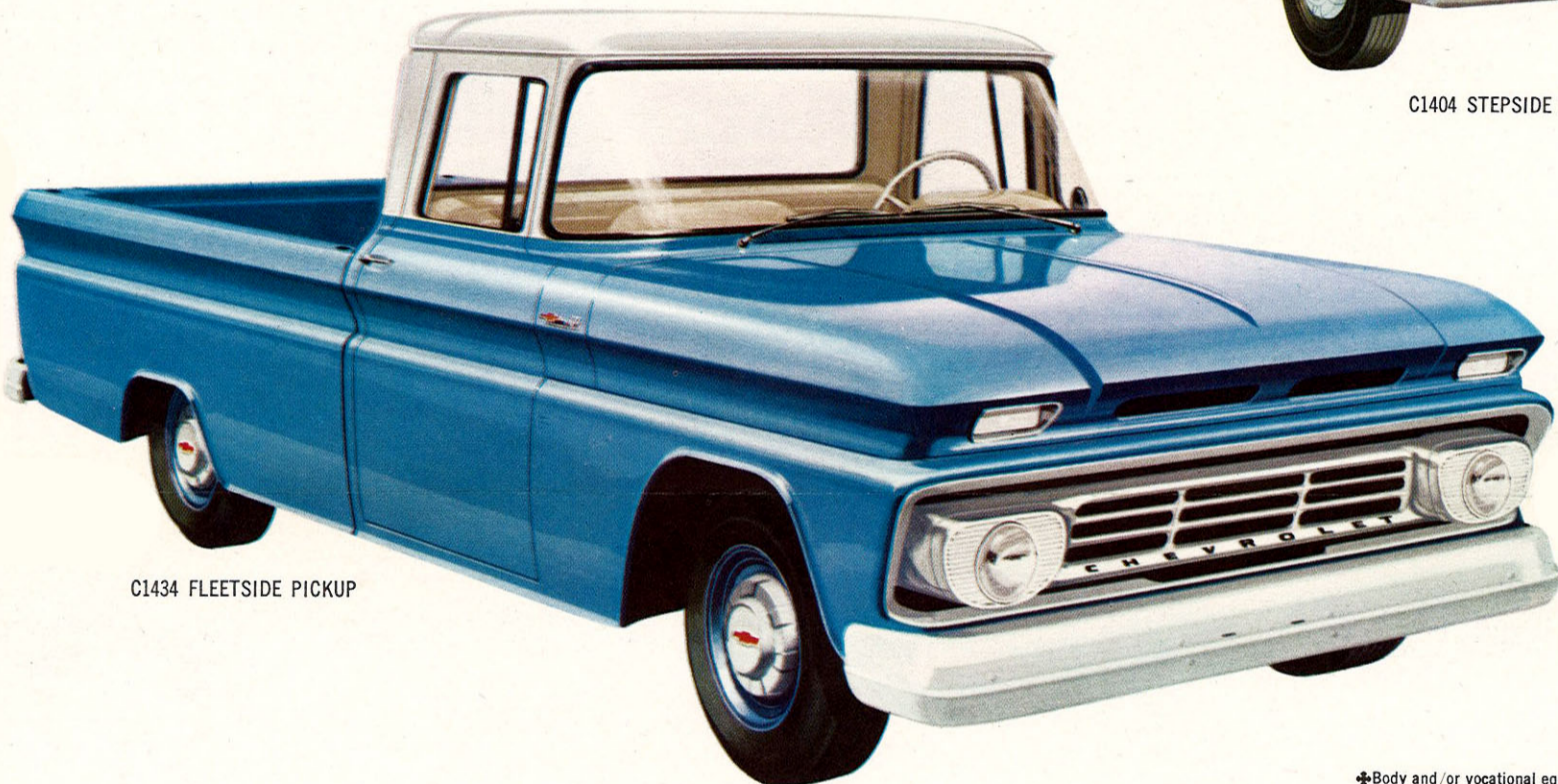
37 sure ways to save. Chevrolet Jobmaster trucks for every chore—ready to match your work with performance that puts you dollars ahead every day in the week! Each model offers crisp new styling, highlighted by a handsome new hood that improves down-front visibility and driving safety. Sixteen new pickups feature big, rugged bodies up to 9 feet long; spacious panel trucks, in two sizes, provide as much as 231 cu. ft. of cargo space. To accommodate special bodies, tough-built chassis-cabs are provided in every series. Sturdy stake models take king-sized loads with bodies as long as 12 feet. Sleek Suburban Carryalls can be equipped to carry 8 adults in comfort—or up to 1,050 lbs. of cargo with the seats removed. And for '62 Chevrolet's light-duty High Torque power lineup is bigger and better than ever: standard power plant is the famous 235 Six; and there are now two great optional (extra cost) engines—the short-stroke 283 V8 and the extra-durable 261 Six!



C1403 CHASSIS-CAB with utility body*



C1404 STEPSIDE PICKUP



C1434 FLEETSIDE PICKUP

*Body and/or vocational equipment are not the products of Chevrolet and are not intended to represent those of any manufacturer.

SPECIFICATIONS

TYPE	SERIES C14 & C15				SERIES K14 & K15				SERIES C25				SERIES K25				SERIES C36				SERIES C40							
	Standard Drive				Four-Wheel Drive				Standard Drive				Four-Wheel Drive				Standard Drive				Standard Drive							
MODEL; BODY TYPE; WB (in.)	Model	Body Type	WB	Model	Body Type	WB	Model	Body Type	WB	Model	Body Type	WB	Model	Body Type	WB	Model	Body Type	WB	Model	Body Type	WB	Model	Body Type	WB				
C1403	Chassis-Cab	115		K1403	Chassis-Cab	115	C2503	Chassis-Cab	127	K2503	Chassis-Cab	127	C3603	Chassis-Cab	133	C4103	Chassis-Cab	133	C1403	Chassis-Cab	133	C4103	Chassis-Cab	133				
C1404	78" Stepside Pickup	115		K1404	78" Stepside Pickup	115	C2504	98" Stepside Pickup	127	K2504	98" Stepside Pickup	127	C3604	108" Stepside Pickup	133	C4109	9" Stake	133	C4109	9" Stake	133	C4303	Chassis-Cab	157				
C1434	78" Fleetside Pickup	115		K1434	78" Fleetside Pickup	115	C2534	98" Fleetside Pickup	127	K2534	98" Fleetside Pickup	127	C3605	101 1/2" Panel	133	C4303	Chassis-Cab	157	C4303	Chassis-Cab	157	C4303	Chassis-Cab	157				
C1405	7 1/2' Panel	115		K1405	7 1/2' Panel	115	C2509	8' Stake	127				C3609	9' Stake	133	C4309	12' Stake	157	C4309	12' Stake	157							
C1406	Suburban Carryall	115		K1406	Suburban Carryall	115																						
C1416	Suburban Carryall	115		K1416	Suburban Carryall	115																						
C1503	Chassis-Cab	127		K1503	Chassis-Cab	127																						
C1504	98" Stepside Pickup	127		K1504	98" Stepside Pickup	127																						
C1534	98" Fleetside Pickup	127		K1534	98" Fleetside Pickup	127																						
GROSS WEIGHT RATINGS	GVW 4300 lb. to 5200 lb.				4900 lb. to 5600 lb.				5500 lb. to 7500 lb.				5700 lb. to 7600 lb.				6700 lb. to 10,000 lb. †				10,000 lb. to 14,000 lb.							
AXLE, FRONT	Type Independent Suspension				Tubular Driving (Ratio 3.92 to 1) †				Independent Suspension				Tubular Driving (Ratio 4.55 to 1) †				Independent Suspension				Independent Suspension							
AXLE, REAR	Rating 3500 lb. Limited-Slip, 3500 lb.				3300 lb.				5200 lb. No-Spin, 5200 lb.				3500 lb.				7200 lb. No-Spin, 7200 lb.				4000 lb.							
BRAKES, PARKING	Location Rear Wheels				Rear Wheels				Rear Wheels				Rear Wheels				Propeller Shaft				Propeller Shaft							
BRAKES, SERVICE	Size Front 11" x 2"				11" x 2"				11" x 2 1/4"				12" x 2"				11" x 2 1/4"				11" x 2 1/4"							
	Size Rear 11" x 2"				11" x 2"				11" x 2 1/4"				12" x 2"				13" x 2 1/4"				15" x 4"							
	Total Lining Area 167 Sq. in.				172 Sq. in.				229 Sq. in.				191 Sq. in.				252 Sq. in.				364 Sq. in.							
ENGINE, HIGH TORQUE	Type 235 Six				261 Six				283 V8				235 Six				261 Six				283 V8							
	Displacement 235.5 Cu. in.				261 Cu. in.				283 Cu. in.				235.5 Cu. in.				261 Cu. in.				283 Cu. in.							
	Gross Horsepower 135				150				160				135				150				160							
	Gross Torque 217 Ft.-lb.				235 Ft.-lb.				270 Ft.-lb.				217 Ft.-lb.				235 Ft.-lb.				270 Ft.-lb.							
	Clutch Dia.; Facing Area (sq. in.) 10"; 100 11"; 124				11"; 124				11"; 124				10"; 100 11"; 124				11"; 124				10"; 100 11"; 124				11"; 124			
	Cooling Capacity 17 Qt. 17 1/2 Qt.				17 1/2 Qt. 18 Qt.				17 Qt. 17 1/2 Qt.				17 1/2 Qt. 18 Qt.				17 Qt. 17 1/2 Qt.				17 1/2 Qt. 18 Qt.							
FRAME	Max. Sec. Dimen.; Max. Sec. Mod. 5 1/2" x 2 1/4" x 1/4"; 3.39				7 3/4" x 2 3/4" x 3/4"; 5.09				5 1/2" x 2 1/4" x 3/4"; 3.91				7 3/4" x 2 3/4" x 3/4"; 5.09				7 3/4" x 2 3/4" x 3/4"; 5.09				8 1/2" x 2 3/4" x 3/4"; 7.29 (Series C41)							
FUEL TANK	Capacity 18 1/2 Gal. (20 Gal., C1405-06-16)				20 Gal.				18 1/2 Gal.				20 Gal.				18 1/2 Gal. (20 Gal., C3605)				20 Gal.							
GENERATOR	Volts; Amps 12; 30				12; 35				12; 30				12; 35				12; 30				12; 35							
SHOCK ABSORBERS	Type Front & Rear				HD Front & Rear				Front & Rear				HD Front & Rear				Front				HD Front & Rear							
SPRINGS, FRONT	Type Torsion				Leaf; 44" Long x 2" Wide				Torsion				Leaf; 44" Long x 2" Wide				Torsion				Torsion							
	Cap. at Ground 1250 lb.				1650 lb. (5-leaf)				1250 lb.				1500 lb.				1500 lb.				1750 lb.							
SPRINGS, REAR	Type; Length & Width Coil				Leaf; 52" x 2 1/2"				Coil				Leaf; 52" x 2 1/2"				Leaf; 52" x 2 1/2"				Leaf; 52" x 2 1/2"							
	No. of Leaves; Cap. at Ground 1250 lb.				2000 lb.				2000 lb.				3000 lb.				6; 1900 lb.				8; 3150 lb.				8; 2400 lb.			
STEERING	Ball-Gear Ratio; Wheel Dia. 24.0 to 1; 17"				24.0 to 1; 17"				24.0 to 1; 17"				24.0 to 1; 17"				24.0 to 1; 17"				24.0 to 1; 17"							
TIRES	Standard 6.70-15/4PR # Front; Single Rear & Spare				6.70-15/4PR # Front; Single Rear & Spare				7-17.5/6PR Front & Single Rear				7-17.5/6PR Front & Single Rear				8-17.5/6PR Front & Single Rear				8-19.5/10PR Front & Dual Rear							
	Maximum 7-17.5/6PR Front; Single Rear & Spare				7-17.5/6PR Front; Single Rear & Spare				8-19.5/10PR Front & Single Rear				8-19.5/10PR Front & Single Rear				8-17.5/6PR Front & Dual Rear†				8-19.5/10PR Front & Dual Rear							
TRANSFER CASE	No. of Speeds 2				2				2				2				2				2							
TRANSMISSION	Type Synchro				Synchro-Mesh				Synchro				Synchro-Mesh				Synchro-Mesh				Synchro-Mesh							
	No. of Speeds 3				3				3				3				3				3							
WHEELS	Type 6-Stud Disc				6-Stud Disc				8-Stud Disc				8-Stud Disc				8-Stud Disc				5-Stud Disc, 4							
	Std. Rim Size; Max. Rim Size 5.00"; 5.25"				5.00"; 5.25"				5.25"; 5.25"				5.25"; 5.25"				5.25"; 5.25"				5.25"; 5.25"							

EQUIPMENT SHOWN IN LIGHT FACE ITALICS OPTIONAL AT EXTRA COST

* Available as accessory item. † 42, 52 and 62 amp Delcotron AC generators also available as extra cost options.

† 7.10-15/4PR tires standard on Suburban Carryalls.

* 235 Six engine with maximum economy carburetor and 3.38 ratio rear axle available as extra-cost option on Series C14 and C15 with standard 3-speed synchro-mesh transmission.

† Free-wheeling front hubs optional at extra cost.

* Max. GVW 7500 lb. for Series C36 Pickup and Panel.

† Dual rear tires not available on Pickup or Panel. Max. tires on C36 Pickup and Panel models are 8-19.5/10PR front and single rear.

4 WHEEL DRIVE MODELS



C1405 PANEL



C4309 STAKE



C3603 CHASSIS-CAB
with van body



C1416 CARRYALL



K1534 FLEETSIDE PICKUP

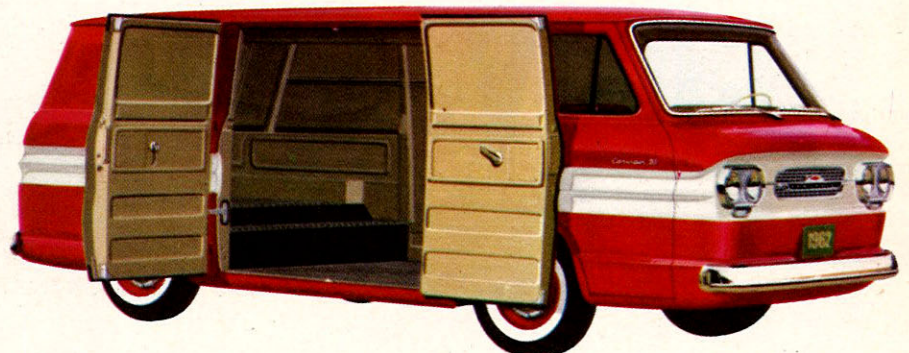
12 models with mountain-goat mobility! Wherever your work takes you, through mud, snow, sand or up towering grades, a Chevy 4x4 with the extra bite of up to double traction is the most dependable way to go! 4-wheel traction is available at the flick of a lever, the moment you need it. Transfer case offers no-clutch shifting, whether moving or standing still. Extra-capacity front axles are fully enclosed; power take-off openings permit driving a wide variety of auxiliary equipment. The wide choice of 1962 Chevrolet 4-wheel-drive models includes Fleetside and Stepside pickups, chassis-cabs, panels and Suburban Carryalls.



K1406 CARRYALL



R1254 RAMPSIDE PICKUP



R1205 CORVAN

Extra-efficient design—now owner proved. Corvair 95 pickups and Corvan have shown owners everywhere a brand of cost-cutting quality that's unique in this truck class. Everything that adds up to extra utility, efficiency and stay-on-the-job sturdiness is right here. With up to 1,850 lbs. of payload capacity, Corvair 95's offer more cargo space than conventional ½-ton trucks—on a nimble 95-inch wheelbase. Low 16¼" floor height assures easy loading (and the Rampside pickup provides an exclusive side gate for easy no-lift loading). And there's the gas-saving aluminum 145 Six that never needs antifreeze or radiator repairs . . . maintenance-saving unitized body-frame . . . tough, double-walled body side panels . . . smooth 4-wheel independent suspension . . . a roomy, comfortable cab . . . and stand-out styling!

SPECIFICATIONS

STANDARD EQUIPMENT

AXLE, REAR: Ratio 3.89.
BRAKES: Hydraulic, front & rear 11" x 2"; lining area 167 sq. in.
CLUTCH: 9½" diameter.
DIRECTIONAL SIGNALS: Front & rear.
ENGINE: 145 Six; 80 h.p.; 145-cu.-in. displacement.
FUEL TANK: Capacity 18½ gallons.
GENERATOR: 12-volt; 30-amp.
GVW: 4,600 lb. maximum.
SPRINGS, FRONT: Coil, capacity 1,150 lb. each.
SPRINGS, REAR: Coil, capacity 1,150 lb. each.
STEERING: Ball-gear, ratio 20.0.
SUSPENSION, FRONT: Independent, capacity 2,500 lb.
SUSPENSION, REAR: Independent, capacity 2,500 lb.
TIRES: Five tubeless 7.00-14/4PR.
TRANSMISSION: 3-speed synchro-mesh.
WINDSHIELD WIPERS: Dual electric; single-speed.

OPTIONAL EQUIPMENT*

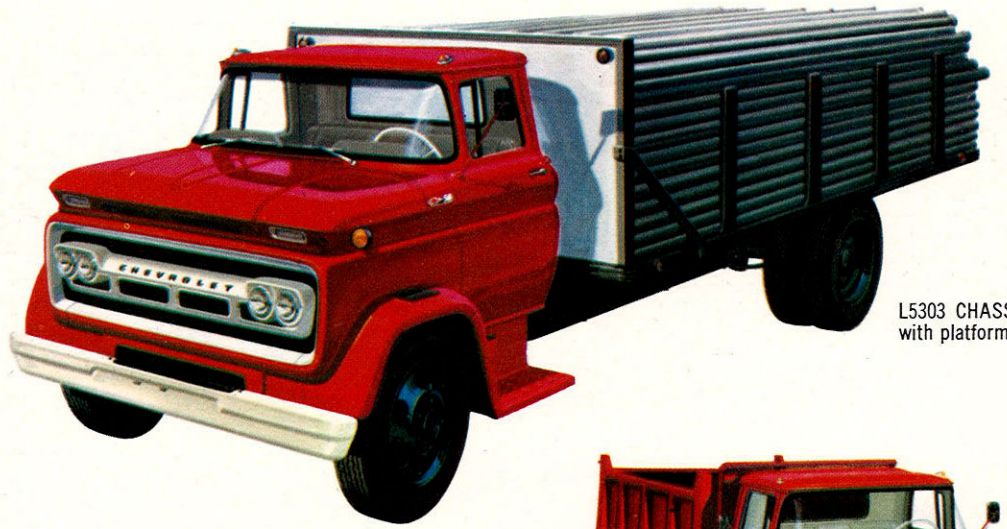
AXLE, POSITRACTION REAR
BUMPERS, CHROMED: Front & rear.
CUSTOM EQUIPMENT: Interior and exterior appearance, comfort and convenience features.
DOORS, BODY: Left side for Corvan model.
FLOOR, LEVEL PICKUP BOX: Pickups only.
HEATER & DEFROSTER: Gasoline operated or direct air.
HUB CAPS, CHROMED
PAINT, TWO-TONE EXTERIOR: Choice of 14 combinations.
RADIO: Manual.
SEAT: Full-width front; single right-hand auxiliary (for Corvan model).
TIRES: 7.00-14/4PR whitewall; 7.00-14/6PR blackwall or whitewall.
TRANSMISSIONS: 4-speed synchro; Powerglide.
WINDSHIELD WIPERS: 2-speed electric (includes washers).

*Extra cost.

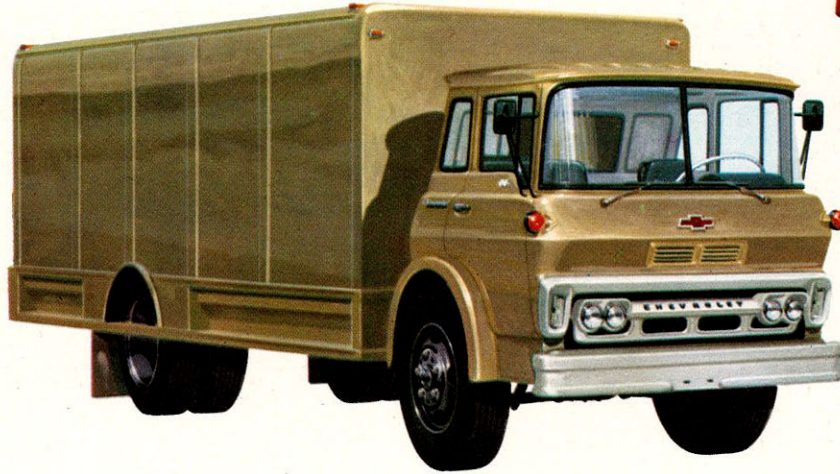
QUALITY-BUILT
CORVAIR 95
MODELS

BIG-MUSCLED MEDIUM- DUTY MODELS

More than ever for '62, there's a Chevrolet middleweight made to measure for every medium-duty haul, with size, capacity, proportions and power precisely tailored to match any job in the 14,000- to 19,500-lb. GVW range. All told there are 50 gasoline-powered conventional-cab models in Series 50 and 60—18 space-saving Low Cab Forwards, and 8 ultra-compact Tilt Cabs. There's new optional-power versatility for every series, with both V8* and extra-duty Six* options for Series 50, and a big, new 327-cu.-in. V8* for Series 60. Also, there's new Easy-View styling for all Conventional and LCF models, plus years-ahead independent front suspension, tough-built Comfort-King cabs, and a wide choice of job-matched components for every model.



L5303 CHASSIS-CAB
with platform body



T6603 CHASSIS-CAB
with van body



C6303 CHASSIS-CAB
with dump body

CHEVROLET-GM DIESEL MODELS

Here's a big-saving new answer to maximum-utilization truck operations in the 15,000- to 25,000-lb. GVW range—a completely new line of Diesel models in Series 60 and up. Series 60 and 60-H models are of conventional-cab design, powered with the pace-setting GM 4-53 four-cylinder diesel engine. Series 80 models feature special cab designs of Low Cab Forward (E80 Series) and Tilt Cab (U80) types, and are powered by the big 6V version of the Series 53 engine. Both engines are thoroughly job-proved, in hundreds of re-power installations. In toughest going, they deliver fuel economy, low upkeep and long life in the best diesel tradition, though their compactness, high power-to-weight ratios, operating speed range and flexibility have virtually revolutionized diesel design. And Chevrolet builds this brand of performance into the industry's most advanced truck chassis—a winning combination slated to put your meanest operations in the black for keeps!



HIGH-CAPACITY HEAVY- DUTY MODELS

Chevrolet's gasoline-powered '62 heavy-weight lineup offers the widest choice of choice hauling equipment, with Conventional, Low Cab Forward, Tilt Cab and Tandem models in Series 60-H and 80—36 in all, ranging from 18,500- to 36,000-lb. GVW. Two big new optional V8's* offer premium power for every model, with 327- and 409-cubic-inch displacement, respectively, for Series 60-H and 80. And 60-H's feature money-saving 6-cylinder power as standard equipment. Every model is built and equipped to highest big-truck standards throughout, with rugged, efficient frames, top-quality components and Chevrolet's years-ahead independent front suspension.

*Optional at extra cost



M8503 TANDEM CHASSIS-CAB
with dump body



T8203 CHASSIS-CAB
with tractor equipment

HEAVY-DUTY SPECIFICATIONS

TYPE	SERIES C60-H & L60-H					
	C60-H Chassis-Cab		L60-H Chassis-Cab			
MODEL; WHEELBASE; CAB-AXLE	Model	WB	CA	Model	WB	CA
	C6103-H	135"	60 1/4"	L6103-H	121"	60"
	C6203-H	145"	72 1/4"	L6203-H	133"	72"
	C6303-H	157"	84 1/4"	L6303-H	145"	84"
	C6503-H	175"	102 1/4"	L6603-H	175"	114"
	C6803-H	197"	124 1/4"	L6903-H	197"	136"
GROSS WEIGHT RATINGS	GVW	23,000 lb.				
	GCW	42,000 lb.				
AXLE, FRONT	Type	Independent Suspension				
	Rating	7000 lb.				
AXLE, REAR	Make & Model	Chevrolet		Eaton 16800		
	Rating	17,000 lb.		17,000 lb.		
	Ratio	7.20 to 1		6.40/8.72 to 1		7.17/9.97 to 1
BRAKES, PARKING	Location	Propeller Shaft				
	Size Front—Std.; Max.	15" x 3"; 15" x 3"				
BRAKES, SERVICE	Size Rear—Std.; Max.	15" x 6"; 15" x 6"				
	Total Lining Area—Std.; Max.	579 Sq. In.; 569 Sq. In.				
	Booster	1 1/4" Diaphragm		Air-Hydraulic		Full-Air
ENGINE, HIGH TORQUE	Type	261 Six		327 V8		
	Displacement	261 Cu. In.		327 Cu. In.		
	Gross Horsepower	150		185		
	Gross Torque	235 Ft.-lb.		305 Ft.-lb.		
	Clutch Dia.; Facing Area	11"; 124		12"; 150		13"; 178 Sq. In.
Cooling Capacity	18 Qt.		21 Qt.		18 1/2 Qt. 21 1/2 Qt.	
FRAME	Max. Section Dimensions; Max. Sec. Mod.					
	C, D, E, L & M W/base: 121"-145"	T&U W/base: 97"-109"		9 1/4" x 3 1/4" x 3/8"; 17.30		
	157"-175"	133"		9 1/4" x 3 1/4" x 3/8"; 18.47		
	193"-197"	145"		9 1/4" x 3 1/4" x 3/8"; 15.68 (19.60 W/L-Reinf.)		
FUEL TANK	Capacity	18 1/2 Gallons		20 Gallons		
GENERATOR	Volts; Amps	12; 30		12; 35		+
SHOCK ABSORBERS	Type		Front		Rear	
	Type		Torsion			
SPRINGS, FRONT	Cap. at Ground	3500 lb.		4000 lb.		
	Type; Length & Width	Variable Rate; 59" x 3"				
SPRINGS, REAR	No. of Leaves; Cap. at Ground	10; 10,400 lb.		11; 11,500 lb.		
	* Ball-Gear Ratio; Wheel Dia.		28.1 to 1; 19"			
STEERING	Standard	8-22.5/8PR Tubeless		8-25-20/10PR Tube		
	Maximum	10-22.5/10PR Tubeless		9-00-20/10PR Tube		
TRANSMISSION	Make & Model	Chevrolet		INP 540C		
	Type	Synchro		Synchro		Synchro
	No. of Speeds	4		5		5
		4		5		6
WHEELS	Type	Cast		Budd-Type Disc		
	Std. Rim Size; Max. Rim Size	6.00"; 7.50"				

EQUIPMENT SHOWN IN LIGHT FACE ITALICS OPTIONAL AT EXTRA COST

♣Body and/or vocational equipment are not the products of Chevrolet and are not intended to represent those of any manufacturer.

MEDIUM-DUTY SPECIFICATIONS

TYPE	SERIES C50 & L50						SERIES C60 & L60						SERIES T60						SERIES D60					
	C50 Chassis-Cab & Stake			L50 Chassis-Cab & Stake			C60 Chassis-Cab			L60 Chassis-Cab			Tilt Cab & Chassis			Chassis-Cab			Chassis-Cab					
MODEL; WHEELBASE, CAB-AXLE OR BODY LENGTH	Model	WB	CA/Body	Model	WB	CA/Body	Model	WB	CA	Model	WB	CA	Model	WB	CA	Model	Wheelbase	Cab-Axle	Model	Wheelbase	Cab-Axle			
C5103	133"	60 1/4"		L5203	133"	72"	C6103	133"	60 1/4"	L6103	121"	60"	T6203	97"	70 1/4"	D6103	133"	60 1/4"	D6103	133"	60 1/4"			
C5109	133"	9-ft.		L5303	145"	84"	C6203	145"	72 1/4"	L6203	133"	72"	T6303	109"	82 1/4"	D6203	145"	72 1/4"	D6203	145"	72 1/4"			
C5203	145"	72 1/4"		L5309	145"	12-ft.	C6303	157"	84 1/4"	L6303	145"	84"	T6603	133"	106 1/4"	D6303	157"	84 1/4"	D6303	157"	84 1/4"			
C5303	157"	84 1/4"		L5603	175"	114"	C6503	175"	102 1/4"	L6603	175"	114"	T6803	145"	118 1/4"	D6503	175"	102 1/4"	D6503	175"	102 1/4"			
C5309	157"	12-ft.					C6803	197"	124 1/4"	L6903	197"	136"				D6803	197"	124 1/4"	D6803	197"	124 1/4"			
C5503	175"	102 1/4"																						
GROSS WEIGHT RATINGS	GVW 14,000 lb. to 16,000 lb.						15,000 lb. to 19,500 lb.						15,000 lb. to 19,500 lb.						15,000 lb. to 19,500 lb.					
AXLE, FRONT	Type Independent Suspension						Independent Suspension						Independent Suspension						Independent Suspension					
AXLE, REAR	Type Independent Suspension						Independent Suspension						Independent Suspension						Independent Suspension					
BRAKES, PARKING	Location Propeller Shaft						Propeller Shaft						Propeller Shaft						Propeller Shaft					
BRAKES, SERVICE	Location Propeller Shaft						Propeller Shaft						Propeller Shaft						Propeller Shaft					
ENGINE, HIGH TORQUE	Type 261 Six						261 Six						261 Six						4-53 GM Diesel					
FRAME	Max. Section Dimensions; Max. Sec. Mod.						Max. Section Dimensions; Max. Sec. Mod.						Max. Section Dimensions; Max. Sec. Mod.						Max. Section Dimensions; Max. Sec. Mod.					
FUEL TANK	Capacity 18 1/2 Gallons						18 1/2 Gallons						18 Gallons						20 Gallons					
SHOCK ABSORBERS	Type Front						Front						Front						Front					
SPRINGS, FRONT	Type Torsion						Torsion						Torsion						Torsion					
SPRINGS, REAR	Type Variable Rate; 59" x 3"						Variable Rate; 59" x 3"						Variable Rate; 59" x 3"						Variable Rate; 59" x 3"					
STEERING	Type Ball-Gear Ratio; Wheel Dia.						Ball-Gear Ratio; Wheel Dia.						Ball-Gear Ratio; Wheel Dia.						Ball-Gear Ratio; Wheel Dia.					
TIRES, FRONT & DUAL REAR	Standard 8-22.5/8PR Tubeless						8-22.5/8PR Tubeless						8-22.5/8PR Tubeless						8-22.5/8PR Tubeless					
TRANSMISSION	Type Synchro-Mesh						Synchro-Mesh						Synchro-Mesh						Synchro-Mesh					
WHEELS	Type Chevrolet Disc						Chevrolet Disc						Chevrolet Disc						Chevrolet Disc					

EQUIPMENT SHOWN IN LIGHT FACE ITALICS OPTIONAL AT EXTRA COST

Available with 261 Six engine only.

Available on special order (COPQ) through Chevrolet Zone Office with 169" WB and 108" CA.

42, 52 and 62 amp Delcotron AC generators also available as extra-cost options.

Power Steering optional at extra cost on Series 60. Available with V8 engine only.



SERIES D60-H			SERIES T60-H			SERIES C80 & L80			SERIES E80			SERIES T80			SERIES U80			SERIES M80					
Chassis-Cab			Tilt Cab & Chassis			C80 Chassis-Cab			L80 Chassis-Cab			E80 Chassis-Cab			Tilt Cab & Chassis			Tandem Chassis-Cab					
Model	Wheelbase	Cab-Axle	Model	Wheelbase	Cab-Axle	Model	WB	CA	Model	WB	CA	Model	WB	CA	Model	Wheelbase	Cab-Axle	Model	Wheelbase	Cab-Axle			
D6103-H	133"	60 1/4"	T6203-H	97"	70 1/4"	C8103	133"	60 1/4"	L8103	121"	60"	E8103	121"	60"	T8203	97"	70 1/4"	U8203	97"	71 1/2"	M8303	157"	84"
D6203-H	145"	72 1/4"	T6303-H	109"	82 1/4"	C8203	145"	72 1/4"	L8203	133"	72"	E8203	133"	72"	T8303	109"	82 1/4"	U8303	109"	83 1/2"	M8503	175"	102"
D6303-H	157"	84 1/4"	T6603-H	133"	106 1/4"	C8303	157"	84 1/4"	L8303	145"	84"	E8303	145"	84"	T8603	133"	106 1/4"	U8603	133"	106 1/4"	M8803	193"	120"
D6503-H	175"	102 1/4"	T6803-H	145"	118 1/4"	C8503	175"	102 1/4"	L8603	175"	114"	E8503	175"	102 1/4"	T8803	145"	118 1/4"	U8803	145"	118 1/4"			
D6803-H	197"	124 1/4"				C8803	197"	124 1/4"	L8803	197"	136"	E8803	197"	136"				U8803	197"	136"			
23,000 lb.			23,000 lb.			18,500 lb. to 25,000 lb.			18,500 lb. to 25,000 lb.			18,500 lb. to 25,000 lb.			18,500 lb. to 25,000 lb.			24,000 lb. to 36,000 lb.					
42,000 lb.			42,000 lb.			51,000 lb.			51,000 lb.			51,000 lb.			51,000 lb.			51,000 lb.					
Independent Suspension			Independent Suspension			Independent Suspension			Independent Suspension			Independent Suspension			Independent Suspension			Independent Suspension					
7000 lb.			7000 lb.			7000 lb.			7000 lb.			7000 lb.			7000 lb.			7000 lb.					
Eaton 16800			Chevrolet			Eaton 16800			Eaton 1790A			Eaton 17800			Eaton 1790A			Eaton 17800					
17,000 lb.			17,000 lb.			18,500 lb.			18,500 lb.			18,500 lb.			18,500 lb.			18,500 lb.					
4.87/6.77 to 1; 2-Spd.			7.20 to 1			6.40/8.72 to 1			7.17/9.97 to 1			7.67 to 1			7.17/9.97 to 1			6.50/8.87 to 1					
Propeller Shaft			Propeller Shaft			Propeller Shaft			Propeller Shaft			Propeller Shaft			Propeller Shaft			Propeller Shaft					
15" x 3"; 15" x 3"			15" x 3"; 15" x 3"			15" x 3"; 15" x 3"			15" x 3"; 15" x 3"			15" x 3"; 15" x 3"			15" x 3"; 15" x 3"			15" x 3"; 15" x 3"					
15" x 6"; 15" x 6"			15" x 6"; 15" x 6"			15" x 7"; 15" x 7"			15" x 7"; 15" x 7"			15" x 7"; 15" x 7"			15" x 7"; 15" x 7"			15" x 7"; 15" x 7"					
579 Sq. In.; 569 Sq. In.			579 Sq. In.; 569 Sq. In.			642 Sq. In.; 644 Sq. In.			633 Sq. In.; 644 Sq. In.			642 Sq. In.; 644 Sq. In.			633 Sq. In.; 644 Sq. In.			642 Sq. In.; 644 Sq. In.					
11 1/2" Diaphragm			11 1/2" Diaphragm			11 1/2" Diaphragm			11 1/2" Diaphragm			11 1/2" Diaphragm			11 1/2" Diaphragm			11 1/2" Diaphragm					
4-53 GM Diesel			261 Six			348 V8			6V-53 GM Diesel			348 V8			6V-53 GM Diesel			348 V8					
212.3 Cu. In. (Two-Cycle)			261 Cu. In.			348 Cu. In.			318.4 Cu. In.			348 Cu. In.			318.4 Cu. In.			348 Cu. In.					
130			150			220			195			220			195			220					
271 Ft.-lb.			235 Ft.-lb.			325 Ft.-lb.			423 Ft.-lb.			325 Ft.-lb.			390 Ft.-lb.			423 Ft.-lb.					
13"; 178 Sq. In.			11"; 124			12"; 150			13"; 178 Sq. In.			13"; 178 Sq. In.			14"; 218 Sq. In.			13"; 178 Sq. In.					
2 1/2 Quarts			2 1/2 Quarts			30 Qt.			26 1/2 Quarts			37 1/2 Quarts			34 1/2 Quarts			30 Qt.					
9 1/4" x 3 1/2" x 7/8"; 17.30			9 1/4" x 3 1/2" x 7/8"; 13.31 (17.30 W/L-Reinf.)			9 1/4" x 3 1/2" x 7/8"; 17.30			9 1/4" x 2 1/2" x 7/8"; 17.30			9 1/4" x 3 1/2" x 7/8"; 13.31 (17.30 W/L-Reinf.)			9 1/4" x 2 1/2" x 7/8"; 17.30			9 1/4" x 3 1/2" x 7/8"; 17.30					
9 1/4" x 3 1/2" x 1/4"; 18.47			9 1/4" x 3 1/2" x 1/4"; 14.47 (18.47 W/L-Reinf.)			9 1/4" x 3 1/2" x 1/4"; 18.47			9 1/4" x 3 1/2" x 1/4"; 18.47			9 1/4" x 3 1/2" x 1/4"; 14.47 (18.47 W/L-Reinf.)			9 1/4" x 3 1/2" x 1/4"; 14.47 (18.47 W/L-Reinf.)			9 1/4" x 3 1/2" x 1/4"; 20.90 (Incl. Reinf.)					
9 1/4" x 3 1/2" x 1/2"; 15.68 (19.60 W/L-Reinf.)			9 1/4" x 3 1/2" x 1/2"; 15.68 (19.60 W/L-Reinf.)			9 1/4" x 3 1/2" x 1/2"; 15.68 (19.60 W/L-Reinf.)			9 1/4" x 3 1/2" x 1/2"; 15.68 (19.60 W/L-Reinf.)			9 1/4" x 3 1/2" x 1/2"; 15.68 (19.60 W/L-Reinf.)			9 1/4" x 3 1/2" x 1/2"; 15.68 (19.60 W/L-Reinf.)			9 1/4" x 3 1/2" x 1/2"; 20.90 (Incl. Reinf.)					
20 Gallons			18 Gallons			20 1/2 Gallons			30 Gallons			18 Gallons			30 Gallons			20 Gallons					
12; 52 (Delcotron)			12; 30			12; 35			12; 52 (Delcotron)			12; 35			12; 52 (Delcotron)			12; 35					
Front			Rear			Front			Rear			Front			Rear			Front					
Torsion			Torsion			Torsion			Torsion			Torsion			Torsion			Torsion					
4000 lb.			4000 lb.			3500 lb.			4000 lb.			4000 lb.			4000 lb.			4000 lb.					
Variable Rate; 59" x 3"			Variable Rate; 59" x 3"			Variable Rate; 59" x 3"			Variable Rate; 59" x 3"			Variable Rate; 59" x 3"			Variable Rate; 59" x 3"			Variable Rate; 59" x 3"					
10; 10,400 lb.			11; 11,500 lb.			10; 10,400 lb.			11; 11,500 lb.			9; 9200 lb.			10; 10,400 lb.			11; 11,500 lb.					
28.1 to 1; 19"			28.1 to 1; 20"			28.1 to 1; 19"			28.1 to 1; 20"			28.1 to 1; 20"			28.1 to 1; 20"			28.1 to 1; 19"					
8-22.5/8PR Tubeless			8-22.5/8PR Tubeless			8-22.5/8PR Tubeless			8-22.5/8PR Tubeless			8-22.5/8PR Tubeless			8-22.5/8PR Tubeless			8-22.5/8PR Tubeless					
10-22.5/10PR Tubeless			10-22.5/10PR Tubeless			10-22.5/10PR Tubeless			10-22.5/10PR Tubeless			10-22.5/10PR Tubeless			10-22.5/10PR Tubeless			10-22.5/10PR Tubeless					
Clark 267V			Chevrolet NP 540C			Clark 265V			Clark 267V			Chevrolet NP 540C			Clark 265V			Clark 267V					
Synchro-Mesh			Synchro			Synchro			Synchro			Synchro			Synchro			Synchro					
5			4			5			5			5			5			5					
Cast			Cast			Cast			Cast			Cast			Cast			Cast					
6.00"; 7.50"			6.00"; 7.50"			6.00"; 7.50"			6.00"; 7.50"			6.00"; 7.50"			6.00"; 7.50"			6.00"; 7.50"					

Available with V8 engine only.

Power Steering standard on Series M80 and optional at extra cost on all other Series 60-H and 80.

Available with 327 V8 engine only in Series 60-H and with 348 V8 only in Series 80.

Available with 348 V8 engine only.

With 180mm front axle only.

COST-SAVING FORWARD CONTROL & SCHOOL BUS MODELS

Wide choice of sturdy, economical multi-stop models. More models—more reasons for reduced delivery expense! Six big Step-Vans come fully equipped with a spacious, stylish body (8, 10 or 12 feet long) on a tough Forward Control chassis with GVW's to 10,000 lbs. For specialized door-to-door deliveries, Chevy's new Step-Van 7 gives you 211 cubic feet of load space astride an easy-handling 102-inch wheelbase. And Chevy's wide range of sturdy-built Forward Control chassis accommodate special bodies of many types and sizes. (Forward Control wheelbases range from 102 to 137 inches; GVW's from 4,300 to 10,000 lbs.) Famous Chevrolet 235 Six provides power that's best for your budget!

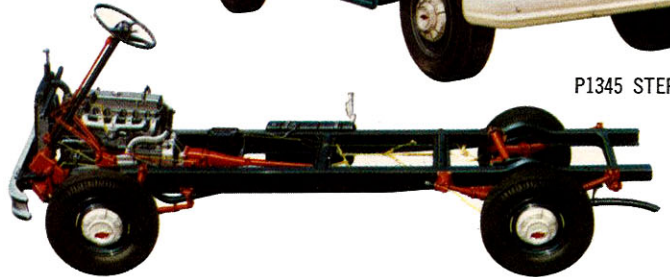
School buses for every pupil-transportation requirement: Five chassis-cowl models ranging up to 261½ inches in wheelbase—chassis to take bodies in sizes from 30- to 66-pupil capacity. Plus eight-passenger Suburban Carryall. All provide big, safe brakes, smooth-riding Independent Front Suspension. Every model is built and equipped to national school bus standards.



P2545 STEP-VAN



P1345 STEP-VAN 7



P2542 FORWARD-CONTROL CHASSIS designed for installation of delivery bodies up to 10 feet in length.



S6702 SCHOOL BUS CHASSIS designed for installation of school bus bodies of 54- to 60-pupil capacity*



C1416 CARRYALL with capacity for driver and up to 8 pupils

*Body and/or vocational equipment are not the products of Chevrolet and are not intended to represent those of any manufacturer.

SPECIFICATIONS

TYPE	SERIES P10				SERIES P20				SERIES P30				SERIES S50			SERIES S62 & S64			SERIES S67			SERIES S69			
	Forward Control				Forward Control				Forward Control				School Bus			School Bus			School Bus			School Bus			
MODEL, TYPE, WB (in.) and/or BODY LENGTH	Model	Type	WB	Body	Model	Type	WB	Body	Model	Type	WB	Body	Model	Type	WB	Model	Type	WB	Model	Type	WB	Model	Type	WB	
	P1342	Chassis	102	—	P2342	Chassis	104	—	P3342	Chassis	104	—	S5302	Chassis-Cowl	157	S6202	Chassis-Cowl	197	S6702	Chassis-Cowl	243	S6902	Chassis-Cowl	261½	
	P1345	Step-Van 7	102	7'	P2345	Step-Van	104	8'	P3345	Step-Van	104	8'				S6402	Chassis-Cowl	225½							
					P2542	Chassis	125	—	P3542	Chassis	125	—													
					P2545	Step-Van	125	10'	P3545	Step-Van	125	10'													
					P2642	Chassis	137	—	P3642	Chassis	137	—													
					P2645	Step-Van	137	12'	P3645	Step-Van	137	12'													
GROSS WEIGHT RATINGS	GVW	4300 lb. to 5400 lb.				5600 lb. to 7000 lb.				7500 lb. to 10,000 lb.				10,500 lb. to 16,000 lb.			15,000 lb. to 21,000 lb.			15,000 lb. to 23,000 lb.			15,000 lb. to 23,000 lb.		
PUPIL CAPACITY, SCHOOL BUS										30 to 36 Pupils				42 to 48 Pupils (S6202) 48 to 54 Pupils (S6402)			54 to 60 Pupils			60 to 66 Pupils					
AXLE, FRONT	Type	Independent Suspension				I-Beam				I-Beam				Independent Suspension			Independent Suspension			Independent Suspension			Independent Suspension		
	Rating	2500 lb.				4000 lb.				4000 lb.				5000 lb.			5500 lb.			7000 lb.			7000 lb.		
AXLE, REAR	Make & Model	Chevrolet				Chevrolet				Chevrolet				Chevrolet			Chevrolet			Chevrolet			Chevrolet		
	Rating	3500 lb. Limited-Slip, 3500 lb.				5200 lb. No-Spin, 5200 lb.				7200 lb. No-Spin, 7200 lb.				13,500 lb. 15,000 lb.			13,500 lb. 15,000 lb.			15,000 lb. 17,000 lb.			15,000 lb. 17,000 lb.		
	Ratio	3.90 3.38 3.90 to 1				5.14 to 1				5.14 to 1				6.60 to 1 6.40/8.72 to 1			6.60 to 1 7.20 to 1 6.40/8.72 to 1			7.20 to 1 6.40/8.72 7.20 6.40/8.72			7.20 6.40/8.72 7.20 6.40/8.72		
BRAKES, PARKING	Location	Rear Wheels				Rear Wheels				Propeller Shaft				Propeller Shaft			Propeller Shaft			Propeller Shaft			Propeller Shaft		
BRAKES, SERVICE	Size Front — Std.; Max.	11" x 2"; 11" x 2"				12" x 2"; 12" x 2"				12" x 2"; 12" x 2"				14" x 2½"; 14" x 2½"			14" x 2½"; 15" x 3"			14" x 2½"; 15" x 3"			15" x 3"; 15" x 3"		
	Size Rear — Std.; Max.	11" x 2"; 11" x 2"				12" x 2"; 12" x 2"				13" x 2½"; 13" x 2½"				15" x 4"; 15" x 4"			15" x 4"; 15" x 4"			15" x 4"; 15" x 6"			15" x 4"; 15" x 6"		
	Total Lining Area — Std.; Max.	167 Sq. In.; 167 Sq. In.				185 Sq. In.; 185 Sq. In.				225 Sq. In.; 225 Sq. In.				381 Sq. In.; 385 Sq. In.			381 Sq. In.; 448 Sq. In.			385 Sq. In.; 579 Sq. In.			448 Sq. In.; 579 Sq. In.		
	Booster	•				7" Hydraulic				7" Hydraulic				11" Diaphragm 11½" Diaphragm			11" Diaphragm 11½" Diaphragm			11" Diaphragm 11½" Diaphragm			11½" Diaphragm		
ENGINE, HIGH TORQUE	Type	235 Six				235 Six (Updraft)				235 Six (Updraft)				235 Six			261 Six			261 Six			261 Six		
	Displacement	235.5 Cu. In.				235.5 Cu. In.				235.5 Cu. In.				235.5 Cu. In.			261 Cu. In.			261 Cu. In.			327 Cu. In.		
	Gross Horsepower	135				135				150				150			150			185			185		
	Gross Torque	217 Ft.-lb.				217 Ft.-lb.				217 Ft.-lb.				235 Ft.-lb.			235 Ft.-lb.			305 Ft.-lb.			305 Ft.-lb.		
	Clutch Dia.; Facing Area	10"; 100 Sq. In. 11"; 124 Sq. In.				11"; 124 Sq. In.				11"; 124 Sq. In.				11"; 124 Sq. In. 11"; 124 Sq. In.			11"; 124 Sq. In. 12"; 150 Sq. In.			13"; 178 Sq. In.			11"; 124 Sq. In. 12"; 150 Sq. In. 13"; 178 Sq. In.		
	Cooling Capacity	17 Qt. 17½ Qt.				17 Qt.				17 Qt.				18 Qt. 18 Qt.			18 Qt. 21 Qt.			18 Qt. 21 Qt.			18½ Qt. 21½ Qt.		
FRAME	Max. Sec. Dimen.; Max. Sec. Mod.													9¼" x 3½" x ¾"; 11.69			9¼" x 3½" x ¾"; 15.68			9¼" x 3½" x ¾"; 16.88			9¼" x 3½" x ¾"; 16.88		
	Wheelbase: 102" — 137"	5½" x 2½" x ¼"; 3.39				7¼" x 2¼" x ¾"; 5.70				7¼" x 2¼" x ¾"; 5.70							9¼" x 3½" x ¾"; 15.68			9¼" x 3½" x ¾"; 16.88			9¼" x 3½" x ¾"; 16.88		
	157"																								
	197"																								
	225½" — 261½"																9¼" x 3½" x ¾"; 16.88			9¼" x 3½" x ¾"; 16.88			9¼" x 3½" x ¾"; 16.88		
FUEL TANK	Capacity	20 Gal.				15½ (Series P23) * 18 (Series P25 & P26)				15½ (Series P33) * 18 (Series P35 & P36)				30 Gal.			30 Gal.			30 Gal.			30 Gal.		
GENERATOR	Volts; Amps	12; 30 12; 35				12; 30 12; 35				12; 30 12; 35				12; 30 12; 35			12; 30 12; 35			12; 30 12; 35			12; 30 12; 35		
SHOCK ABSORBERS	Front & Rear	HD Front & Rear				Front & Rear				Front & Rear				Front Rear			Front Rear			Front Rear			Front Rear		
SPRINGS, FRONT	Type	Torsion				Leaf; 44" Long x 2" Wide				Leaf; 44" Long x 2" Wide				Torsion			Torsion			Torsion			Torsion		
	Cap. at Ground	1250 lb. 1500 lb.				2000 lb. (8-leaf)				2000 lb. (8-leaf) 2500 lb. (10-leaf)				2500 lb. 3000 lb.			2500 lb. 3000 lb.			3000 lb. 3500 lb.			3000 lb. 3500 lb.		
SPRINGS, REAR	Type; Length & Width	Coil				Leaf; 52" x 2½"				Leaf; 52" x 2½"				Variable Rate; 59" x 3"			Variable Rate; 59" x 3"			Variable Rate; 59" x 3"			Variable Rate; 59" x 3"		
	No. of Leaves; Cap. at Ground	1250 lb. 2000 lb.				8; 2400 lb.				8; 2400 lb. 8+5 Aux.; 3450 lb. 12; 4350 lb.				9; 7500 lb. 9; 9200 lb.			9; 7500 lb. 9; 9200 lb.			9; 9200 lb. 10; 10,400 lb.			9; 9200 lb. 10; 10,400 lb.		
STEERING	Ball-Gear Ratio; Wheel Dia.	24.0 to 1; 17"				26.1 to 1; 18"				26.1 to 1; 18"				28.1 to 1; 19"			28.1 to 1; 19"			28.1 to 1; 19"			28.1 to 1; 19"		
TIRES	Standard	6.70-15/4PR				7-17.5/6PR Front & Single Rear				8-19.5/6PR Front & Single Rear				7-22.5/6PR Front & Dual Rear			8-22.5/6PR Front & Dual Rear			8-22.5/6PR Front & Dual Rear			8-22.5/6PR Front & Dual Rear		
	Maximum	7-17.5/6PR				8-17.5/6PR Front & Single Rear				8-19.5/6PR Front & Dual Rear				9-22.5/10PR Front & Dual Rear			10-22.5/10PR Front & Dual Rear			10-22.5/10PR Front & Dual Rear			10-22.5/10PR Front & Dual Rear		
TRANSMISSION	Make & Model	Chevrolet				Chevrolet				Chevrolet				Chevrolet			Chevrolet			Chevrolet			Chevrolet		
	Type	Synchro HD Synchro Synchro Powerglide				Synchro HD Synchro Synchro Hydra-Matic				Synchro HD Synchro Hydra-Matic				Synchro			Synchro NP 540C Clark 265V Clark 267V Clark 267V			Synchro NP 540C Clark 265V Clark 267V Clark 267V			Synchro Clark 265V Clark 267V Clark 267V		
	No. of Speeds	3 3 4 2				3 3 4 4				4 3 4 4				4			4 5 5 5 6 4			4 5 5 5 6 4			4 5 5 5 6 4		
WHEELS	Type	8-Stub Disc				8-Stub Disc				8-Stub Disc				Chevrolet Disc			Chevrolet Disc			Chevrolet Disc			Cast		
	Std. Rim Size; Max. Rim Size	5.00"; 5.25"				5.25"; 5.25"				5.25"; 5.25"				5.25"; 6.75"			6.00"; 6.75"			6.00"; 6.75"			6.00"; 6.75"		

EQUIPMENT SHOWN IN LIGHT FACE ITALICS OPTIONAL AT EXTRA COST

• Cooling capacities shown are for models with synchro-mesh transmissions. Additional cooling capacity provided with Powermatic transmission.

* Power Steering optional at extra cost on Series S60 and S70 School Buses. ** 30-gallon fuel tank available on Series P25, P26, P35 and P36.

† Available with 261 Six engine only. ‡ Available with 327 V8 engine only.

▲ 42, 52 and 62 amp Delcotron AC generators also available as extra cost options.

All illustrations and specifications contained in this literature are based on the latest product information available at the time of publication. The right is reserved to make changes of any time in prices, colors, materials, equipment, specifications and models, and also to discontinue models. CHEVROLET MOTOR DIVISION OF GENERAL MOTORS CORPORATION, DETROIT 2, MICHIGAN

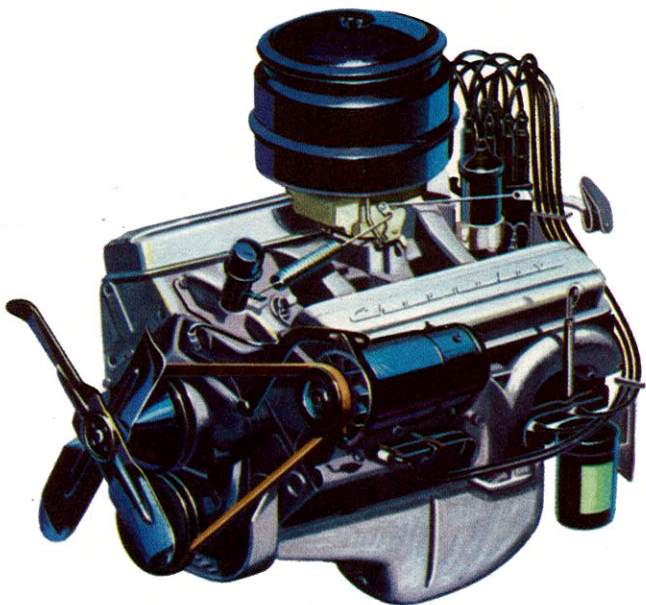
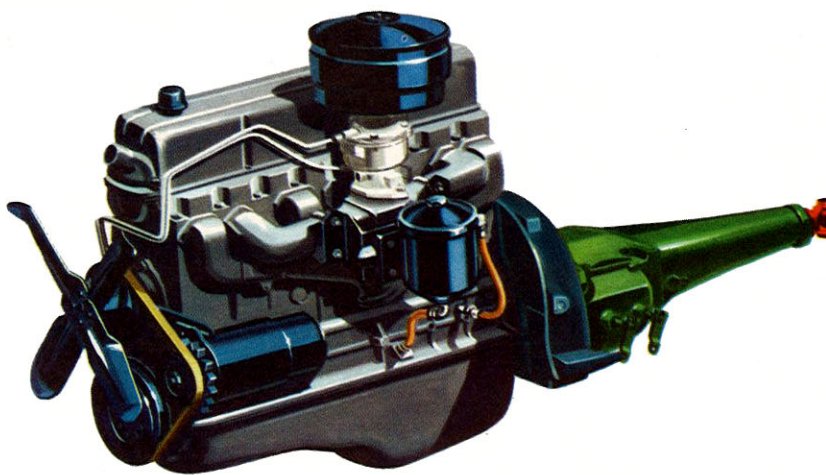
HIGH-TORQUE POWER

More hustle and muscle under the hood—more money-making Chevrolet truck power for '62!

Chevrolet is here with the "horses"—more torque and toughness to stay ahead of any job, in ten built-to-work 1962 High Torque power plants. *In the light-duty lineup*, for example, standard power is provided by the most widely used truck engine in the industry, the famous-for-economy Chevrolet 235 Six. Also available is the short-stroke 283 V8* and the 150-h.p. 261 Six*, a durable load-puller that's ideal for extra-tough applications. *Top middle-weight earning power for '62* stems from money-saving standard-equipment sixes, the High Torque 235 and 261. And there's optional V8 power for all models, including the new High Torque 327 V8* for Series 60 and 60-H. *In the heavy-duty line*, Chevrolet's work-proved, short-stroke 348 V8 is standard in Series 80. And the husky new 409 V8* for Series 80 puts out a brand of performance that's made to order for maximum efficiency on top-tonnage hauls. *Chevrolet's completely new Series 60, 60-H and 80 Diesel models* feature both four and V6 versions of the advanced Series 53 GM Diesel. *And, in Corvair 95 pickups and Corvan*, the rear-mounted aluminum 145 Six offers more of the air-cooled, low-cost working ability that's won high praise from haulers over the past year. Here's a broad, modern lineup of true truck power plants

—a range of power that enables you to match your job with the *right* engine, one that's designed throughout to keep the savings coming every day you work!

**Optional at extra cost.*



JOB-MATCHED DRIVE LINE COMPONENTS

Makes no difference which '62 Chevy truck you choose, you can be certain of getting the *right* components—as either standard or optional equipment — to do the job with maximum dependability and least expense. The *many* tough-built Chevy components, outlined briefly below, make it a sure thing! Among the new features for '62 are bigger capacity 17,000-lb. rear axles and rugged Clark 5-speed transmissions for Series 60 and 60-H, and durable Spicer 4-speed auxiliary transmission for tandem models.

TOUGH SYNCHRO-MESH TRANSMISSIONS, 3-, 4- and 5-speed, mean smooth shifting and long life in every Chevy. Heavy-duty, normal or close-ratio options available.

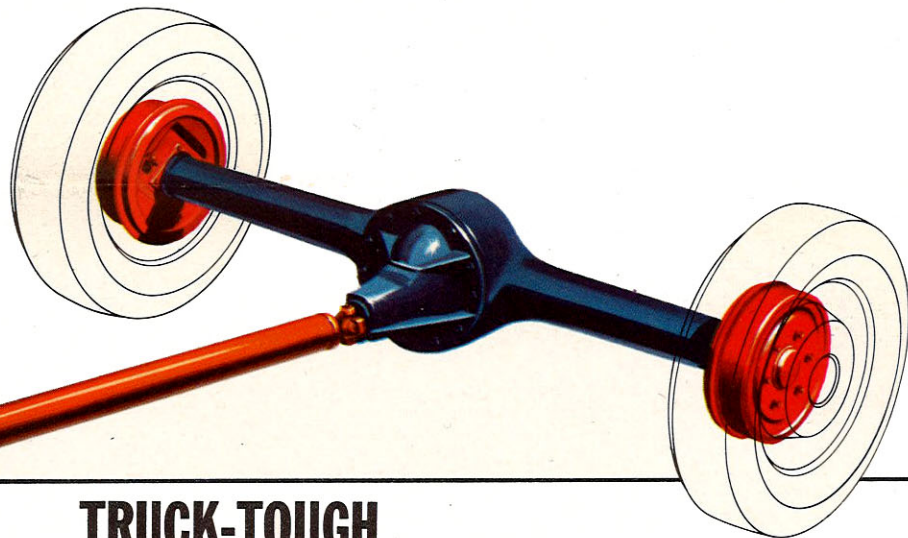
SMOOTH, EASY-DRIVING AUTOMATIC TRANSMISSIONS, available in light-, medium- and heavy-duty models, cut driver effort 'way down, cushion out shocks.

RUGGED REAR AXLES range from 3,300- to 18,500-lb. capacity, tailored for top payload performance in each weight class. Two speeds and optional ratios available.

PRECISION BALL-GEAR STEERING substitutes rolling steel balls for sliding gear teeth, to minimize friction and steering effort—and it's standard in every Chevrolet truck for '62.

TORQUE-TAILORED CLUTCHES, in 10-, 11-, 12- and 13-inch diaphragm and coil spring types, are matched to each engine for top performance, economy and durability.

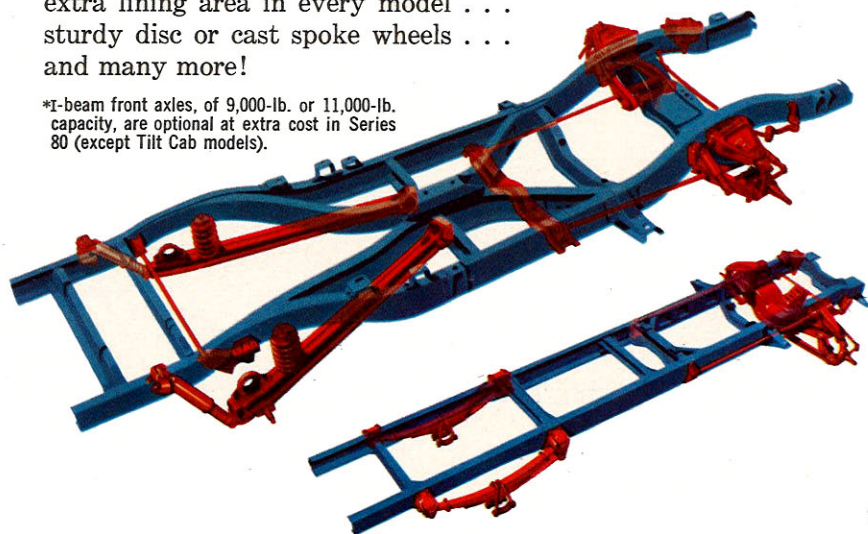
RUGGED EATON-HENDRICKSON BOGIE for tandem models pairs two tough-built axles in a true-tracking suspension system, delivers full-time tandem traction without inter-axle wheel fight.

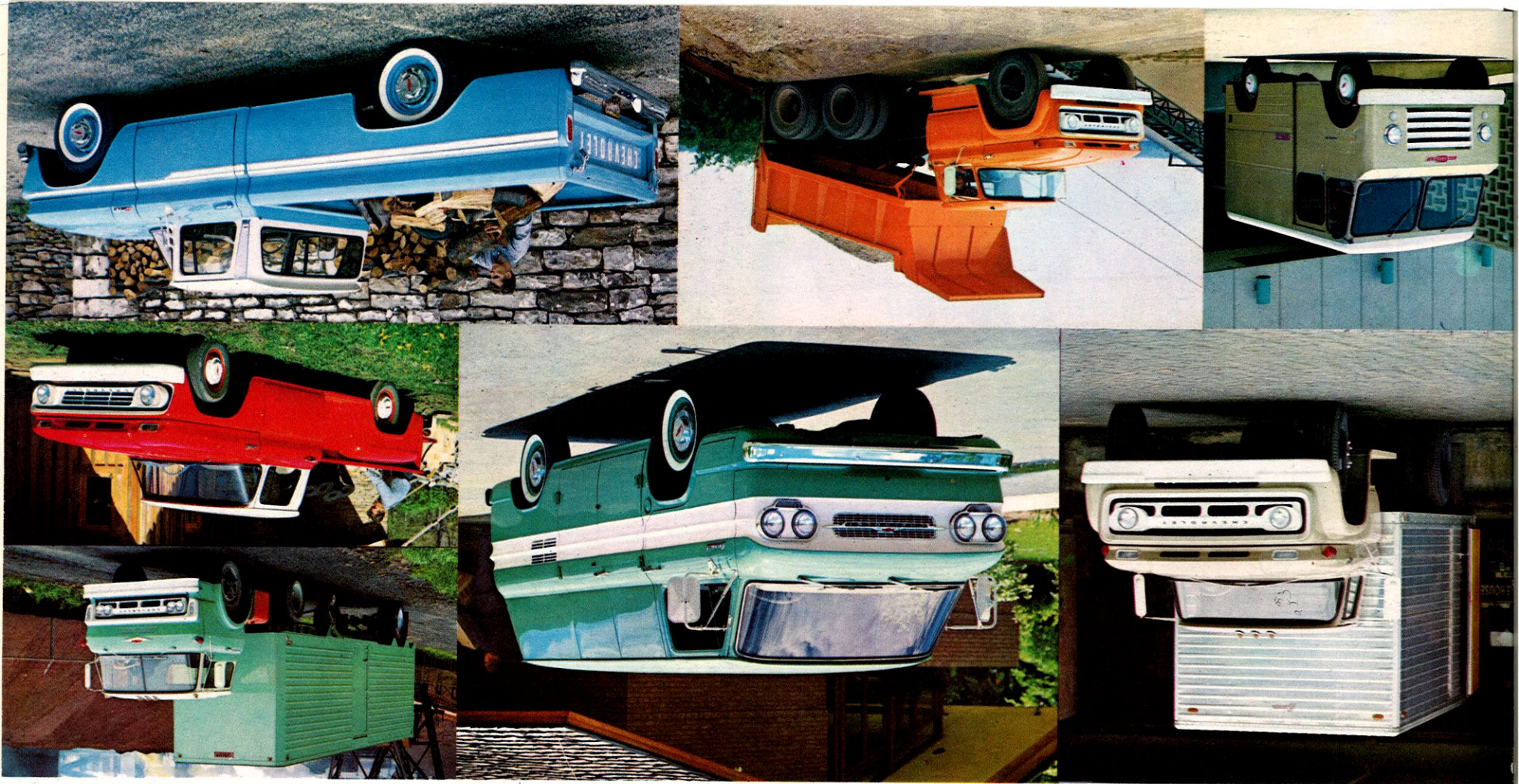


TRUCK-TOUGH CHASSIS FEATURES

Stay-on-the-job stamina is standard in Chevy for '62, thanks to chassis features such as these: Smooth-going Independent Front Suspension* that paves the way to less truck wear and maintenance expense . . . wide-range, ride-tailored rear suspensions throughout the line . . . massive box-section frames, reinforced for maximum duty . . . big, safe brakes with extra lining area in every model . . . sturdy disc or cast spoke wheels . . . and many more!

*I-beam front axles, of 9,000-lb. or 11,000-lb. capacity, are optional at extra cost in Series 80 (except Tilt Cab models).





MODELS & SPECIFICATIONS

CHEVROLET TRUCKS 1962

COMFORT-KING CABS FOR '62

They're better built to treat you right and cost you less in the long run. Chevy's 1962 Comfort-King cabs bring you matchless comfort and convenience to ease long hours at the wheel. With advanced drop-frame chassis design, you get a low, full-width cab floor, making it easier to get in and out and more comfortable on the road. There are wide, deep-cushioned seats with plenty of room for three, with durable all-vinyl upholstery standard and rich cloth and vinyl trim in the extra-cost custom comfort option (including a full 6-inch foam seat cushion, which is also available as a separate option with standard trim). There are high, wide windshields for a better view of the road ahead, complemented by the new hood design that lets you see the road directly in front of the truck up to 10½-feet closer. All driving instruments and controls are clustered in a hooded anti-reflection console directly in front of the driver. Cab doors seal tight and stay rattle-free, thanks to extra-rugged Chevrolet precision construction.

Extra-quality cab construction: *Deep sculptured double-panel roof* adds rigidity to entire cab structure; *reinforced box-section pillars* support roof and frame doorways, help keep doors working right; *massive double-walled cowl arch* bridges front of cab structure, uniting door frames, dash and floor panels in an integrated, high-strength assembly; *rugged floor panel assembly* is double-braced with massive crossmembers.

