

COMPETITIVE FACTS REPORT

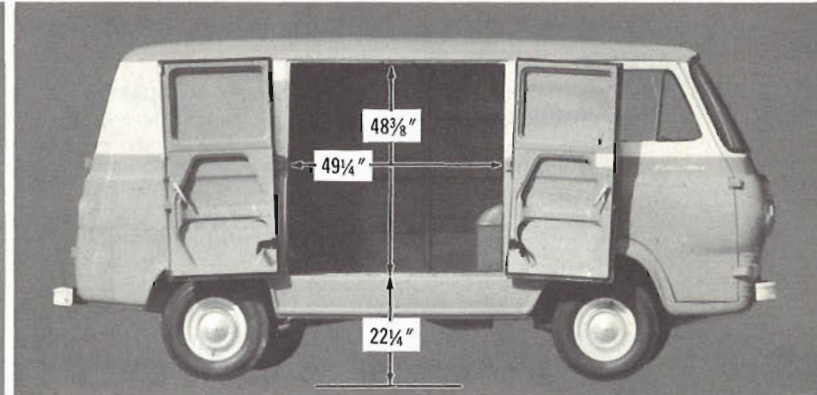
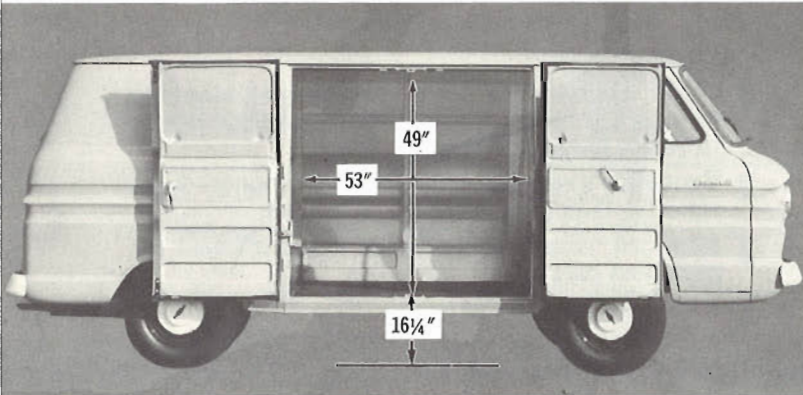
#3

**CHEVROLET
CORVAIR 95**


CONFIDENTIAL FOR CHEVROLET SALESMEN

**FORD
ECONOLINE**

HERE ARE THE EASY-TO-POINT-OUT CORVAIR 95 QUALITY FEATURES
THAT'LL PROVE CORVAIR 95 SUPERIORITY TO PROSPECTS!



EASIER LOADING; GREATER CARGO CAPACITY; SLEEK, TRIM DIMENSIONS—ALL CONTRIBUTE TO CORVAN'S GREATER VALUE!

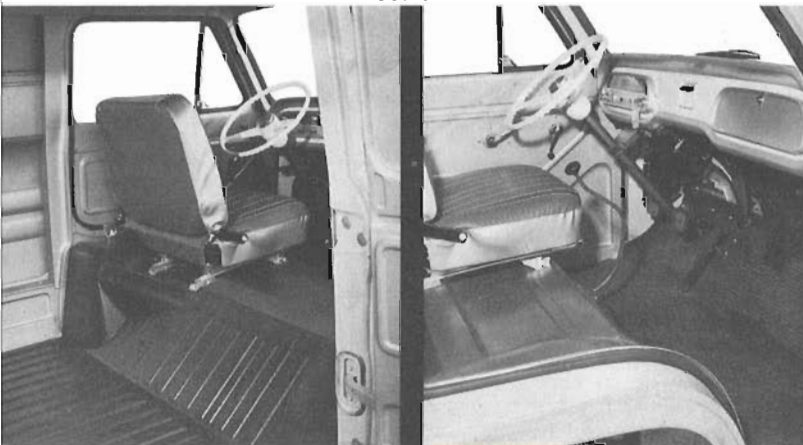
Corvan

- 1 Maximum GVW rating: 4,600 lbs.
- 2 Double-walled construction in doors and lower side panels for greater durability and protection.
- 3 Two-position metal door checks hold Corvan's side doors in open position—especially important in windy weather.
- 4 Curb-side loading height is $16\frac{1}{4}$ "—6" lower than Econoline's! For added loading ease, Corvan's side doors are nearly 4" wider. Optional left-side doors* make loadspace even more accessible.

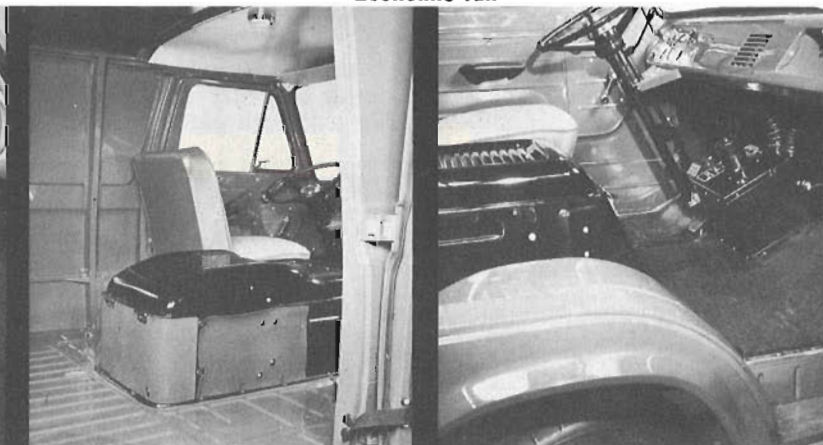
Econoline van

- 1 Maximum GVW rating: 4,350 lbs.
- 2 Single-walled doors and side panels—typical of Econoline's minimum construction.
- 3 Econoline offers only cloth straps to stop doors in half-open position. No provision is made to hold doors open in the wind.
- 4 Side-door loading height is $22\frac{1}{4}$ "—making loading and unloading more difficult. Left-side doors are not available on the Econoline.

Corvan



Econoline van



QUALITY OF DRIVER'S COMPARTMENT PROVES THE OVERALL EXCELLENCE OF CORVAIR 95'S DESIGN & CONSTRUCTION!

Corvan

- 1 Full-width seat or auxiliary folding passenger seat is optional on the Corvan.*
- 2 Sculptured instrument panel, locking glove box and a wide, unobstructed floor contribute to driver comfort and convenience.
- 3 Low ground-to-floor height provides full-width floor—easier entry and exit.

Econoline van

- 1 Engine box extends well into cargo area, prevents a full-width seat, creates noise, heat and fumes.
- 2 Obstructed floor and engine box in the driver's compartment deprive driver of maximum comfort. Glove box door costs extra.
- 3 Higher $22\frac{1}{4}$ " ground-to-floor height makes this step well necessary—reducing floor space.

*Optional at extra cost.



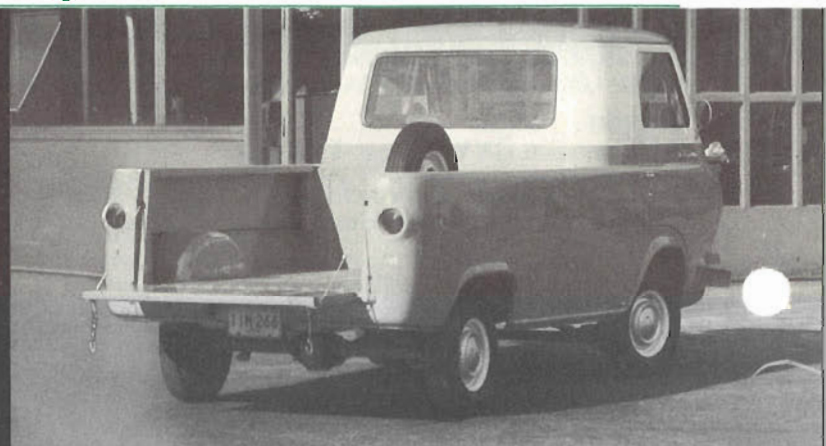
IT'S **CORVAIR 95** OVER ECONOLINE IN CARGO AREA, TOO!

Corvan

- 1 Driver can easily get from driver's compartment to cargo area without getting out of the truck.
- 2 Corvan's roof is reinforced by five sturdy roof bows, and lower side panels are double-walled.
- 3 Rectangular wheelhousing design puts every inch of loadspace to work.
- 4 Rear windows standard on Corvan.

Econoline van

- 1 Bulky engine box necessitates driver climbing awkwardly between engine box and floor heater to reach his cargo from the inside.
- 2 Econoline's roof has only three roof bows—lacks rigidity. Side panels are single-walled.
- 3 Rounded wheelhousing design is less efficient for packaged cargo.
- 4 Rear windows cost extra.



QUALITY-BUILT **CORVAIR 95** PICKUPS OUTWORK, OUTPERFORM, OUTLAST ECONOLINE PICKUPS, TOO!

Corvaair 95 pickup

- 1 Double-walled side panels provide extra strength. Exterior of truck never appears bumped or dented because interior side wall-panel takes all abuse.
- 2 Twenty inches more cargo length; 9 cu. ft. more loadspace and up to 225 lbs. more payload capacity than Econoline.
- 3 Side ramp provides easy no-lift loading.
- 4 Rear bumper standard.
- 5 Spare tire stows away neatly behind full-width driver's seat.

Econoline pickup

- 1 Single-walled side panels have less durability than Corvaair 95's double-walled construction. Pickup box abuse shows up on Econoline's exterior.
- 2 Engine box requires longer cab which cuts down on cargo area. Loadspace is limited to only 73 cu. ft. Corvaair 95's loadspace is 82½ cu. ft.
- 3 No side ramp available.
- 4 Rear bumper costs extra.
- 5 Spare tire takes up valuable cargo space and is subject to theft. Full-width seat not available.

HERE ARE MORE **CORVAIR 95** PLUS-FEATURES THAT WILL INTEREST PROSPECTS!

- * Corvaair 95 offers optional 4-speed and automatic transmissions at extra cost—Econoline offers only the standard 3-speed transmission.
- * Corvaair 95 has 4-wheel independent suspension that offers unmatched riding smoothness—Econoline has an I-beam front axle and leaf suspension that transmits road shock to the body.
- * With the engine in the rear, cargo floor is lower for easier side loading because there is no drive line—Econoline's load floor is 6" higher because of its conventional drive line.

POINT OUT THESE VALUABLE ADVANTAGES TO EVERY CORVAIR 95 PROSPECT!

All illustrations and specifications contained in this literature are based on the latest product information available at the time of publication approval. The right is reserved, with respect to Chevrolet trucks, to make changes at any time without notice in prices, colors, materials, equipment, specifications and models, and also to discontinue models. CHEVROLET MOTOR DIVISION OF GENERAL MOTORS CORP., DETROIT 2, MICH.

LITHO IN U. S. A.