

1961 CHEVROLET TRUCK COLORS

**DUCO®
STOCK AND CODE NUMBER**

**RPO
Combination
Number**

4188
202-94826 Tampico Turquoise Metallic

710A, 727 (L), 745 (U)



DUCO 4188 } Tampico Turquoise
DULUX® 181-25804 } Metallic

4189
202-94840 Tahiti Coral Metallic

725A, 743 (L)



DUCO 4189 } Tahiti Coral
DULUX 181-25805 } Metallic

4190
246-77161 Woodland Green

705A, 732 (L)



DUCO 4190 } Woodland Green
DULUX 93-77161 }

4191
246-77162 Balboa Blue

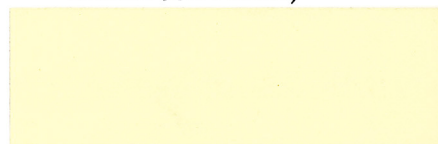
708A, 735 (L)



DUCO 4191 } Balboa Blue
DULUX 93-77162-H }

4192
246-77164 Flaxen Yellow

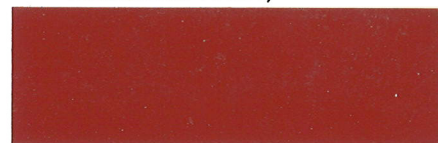
718A, 729 (L)



DUCO 4192 } Flaxen Yellow
DULUX 93-77164 }

4193-H
246-77203-H Romany Maroon

724A, 737 (L)



DUCO 4193-H } Romany Maroon
DULUX 93-77203-H }

4194
246-77204 Woodsmoke Blue

723A, 746 (L)



DUCO 4194 } Woodsmoke Blue
DULUX 93-77204 }

4195
246-94001 Cameo White

726A, 745 (L)
(Two-Tone Upper Color)



DUCO 4195 } Cameo White
DULUX 93-93774 }

The following are repeated from previous production:

DUCO® Stock Number	DULUX®	Color	RPO Combination Number
31	93-082	Omaha Orange	716A, 742 (L)
174	93-6578	Yukon Yellow	719A, 744 (L)
★817	★93-21667	Pure White	721A, F, G, H
2411-H	93-58209-H	Cardinal Red†	714A, 740 (L)
4050	93-76548	Brigade Blue	707A, 736 (L)
4052	93-76550	Neptune Green	703A, 731 (L)
#44	93-005	Jet Black	700A, 728 (L)

†For "Touch-Up Only." Not recommended for panel repair or over-all refinishing.

INTERIOR COLORS

DUCO Stock Number	Color
2411-H	††Cardinal Red
4050	††Brigade Blue
4052	††Neptune Green
4227■	Silver Gray Metallic
4228■	Charcoal Metallic

★A Du Pont mixing machine formula for DULUX Enamel is not available.

■A Du Pont mixing machine formula for DUCO Lacquer is not available.

††Also exterior colors.

ORDER BY DUCO STOCK NUMBER

NOTE: Where semi-gloss is required the addition of #4528 Flattening Compound is recommended in accordance with label directions.

NOTE: Every possible precaution is taken to provide the refinish trade with accurate DUCO and DULUX color matches; however, it should be noted that it is not always possible to make close matches in DUCO to DULUX and vice versa.

Due to circumstances beyond our control, we cannot be responsible for inaccurate color matches resulting from changes in standards by automobile manufacturers without our knowledge, change of car colors on aging, and color variances caused by application methods, etc. We will assume responsibility only for factory color matches to established Du Pont color standards.

As the accuracy of color matches made with the Du Pont Color Blending Service depends on the individual operating the equipment, we will assume responsibility only for the uniformity of our mixing enamels and lacquers.

NOTE: RPO combination letter designations are:

A—Over-all (solid color).

TWO-TONE COMBINATIONS

B—C-1405, K-1405, C-3605 Models.

C—C-1406-16, K-1406-16 Models.

D—All Cabs (except Fleetside).

E—R-1205 Panel.

F—R-1206 Suburban.

G—R-1244-54 Pickup.

J—Fleetside.

L—Tilt Cab.

Wheels on all C-14-15-25-36 series Two-Tone models are the body basic color. All other wheels are Black.

All series depressed area on hood filler panel, radiator grilles, grille areas on front fenders and grille baffle, bumpers and headlamp bezels are Cameo White except Pure White on white jobs.

Air scoop areas on front fenders and grille baffle on all series are Flat Black (Refinish DULUX #44 Black or DUCO 246-92 Black with #4528 Flattening Compound added for emergency repair).

The "Chevrolet" name on all series is Black.